

91°53'W

91°52'W

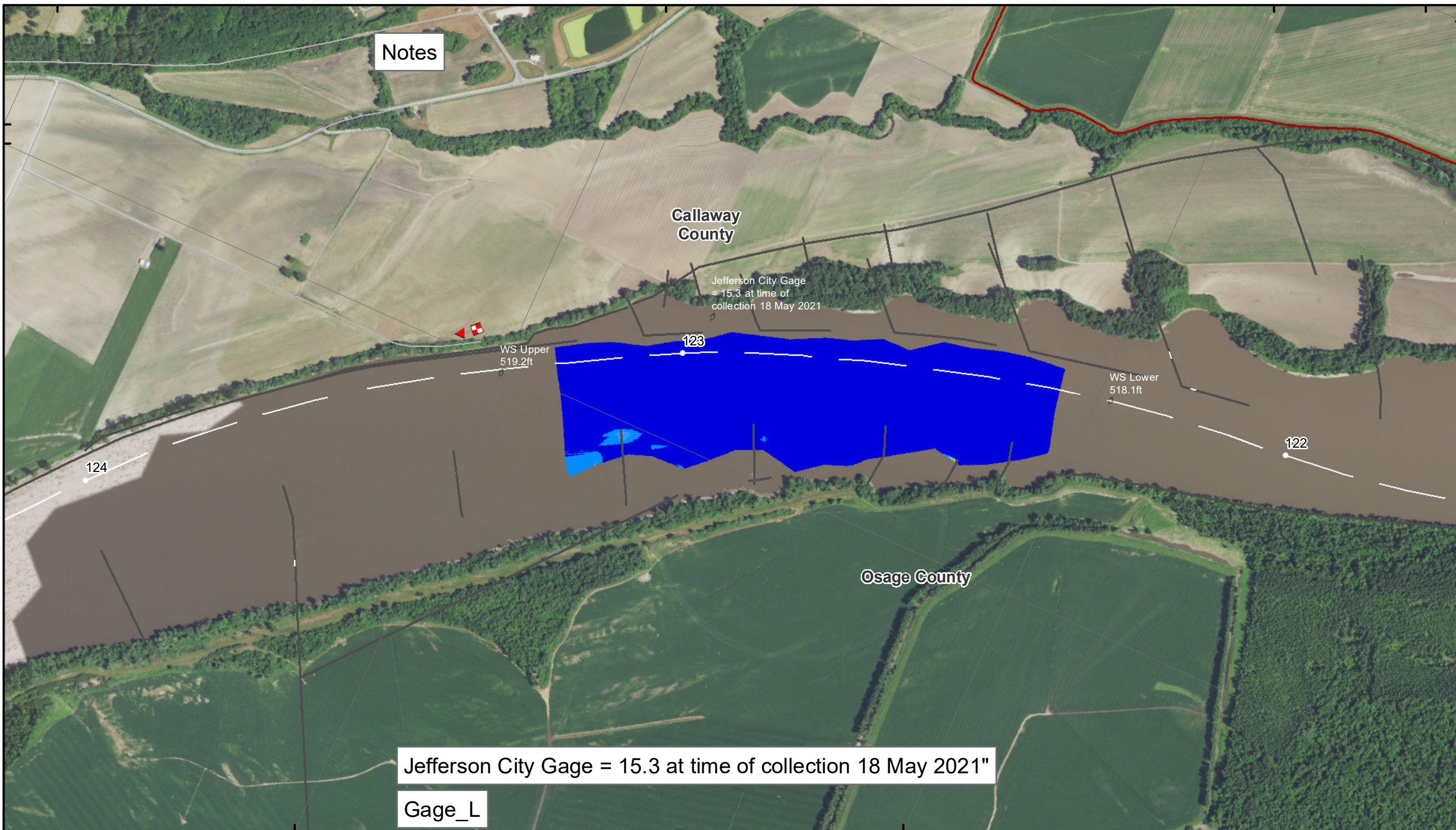
91°51'W

38°41'N

38°40'N

38°41'N

38°40'N



Notes

Callaway County

Osage County

Jefferson City Gage = 15.3 at time of collection 18 May 2021

WS Upper 519.2ft

WS Lower 518.1ft

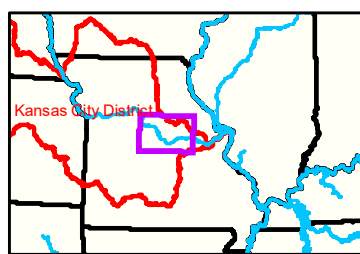
124

123

122

Jefferson City Gage = 15.3 at time of collection 18 May 2021"

Gage_L



91°52'W

91°51'W

LEGEND

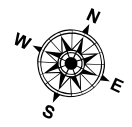
	< 8		< 8 ft		Green Passing		Green
	8 - 9		8 - 9 ft		Red Passing		AIS Green CAN
	9 - 9.5		9 - 10 ft		Green Crossing		AIS Red NUN
	9.5 - 10		10 - 12 ft		Red Crossing		Green CAN
	10 - 12		River Mile				Red NUN
	12 - 14		Sailing Line				
	14 - 16		BSNP Structure				
	> 16		Levee				

Buoy

- Green
- Red
- Junction

Scale: 0 312.5 625 937.5 1,250 2,500 Feet

NOTES:
 Horizontal Coordinate System: World Geodetic System of 1984 (WGS84), projected to the Universal Transverse Mercator (UTM) Zone 15 North. Distance units in U.S. Survey Feet.
 Vertical Datum: Soundings are shown in feet and indicated depths are referenced to water surface at time of collection.
 The information depicted on this map represents the results of a survey conducted on the date indicated and can only be considered to represent the general condition existing at that time.
 The location of navigation aids are based on and provided by the U.S. Coast Guard.



DISCLAIMER: The U.S. Army Corps of Engineers provides this information for informational purposes only. It is not intended for use in any legal proceeding or as a basis for any action. The Corps of Engineers makes no warranty, express or implied, regarding the accuracy, completeness, or timeliness of the information provided. The Corps of Engineers is not responsible for any errors or omissions in this information. The information is provided as is, without any representation or warranty of any kind. The user assumes all liability for any use of this information.

KANSAS CITY DISTRICT MISSOURI RIVER AREA OFFICE	
Submitted By:	MRAO
Reviewed By:	MRAO
Approved By:	MRAO

Survey Information

MO_02_LMR
 MO_02_LMR_20210518_CS_122_4_123_2_SORT
 18 May 2021

Sheet Number
 11 of 46